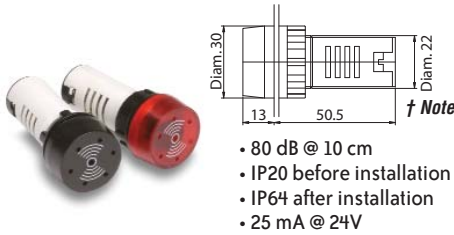


22mm Pilot Devices

Audible annunciator



- 80 dB @ 10 cm
- IP20 before installation
- IP64 after installation
- 25 mA @ 24V

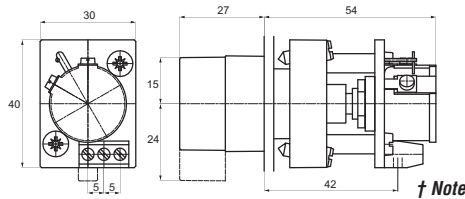
Part Number	Description	Color	Price
ECX2070-24	22 mm, 25 mA audible (80dB at 10 cm) buzzer annunciator. 24VAC/DC	Black	<--->
ECX2070-127	22 mm, 25 mA audible (80dB at 10 cm) buzzer annunciator. 120VAC/DC	Black	<--->
ECX2071-24R	22 mm, 25 mA audible (80dB at 10 cm) buzzer annunciator with non-replaceable LED indicator. 24VAC/DC	Red	<--->
ECX2071-127R	22 mm, 25 mA audible (80dB at 10 cm) buzzer annunciator with non-replaceable LED indicator. 120VAC/DC	Red	<--->

22 mm potentiometer



• IP65

Part Number	Description	Quantity	Price
ECX2300-5K	22 mm potentiometer with 5k Ω resistance, $\pm 10\%$. Nominal voltage: 250V. Rated dissipation: 2W at 25°C. Temperature range -40°C to 70°C. Black handle	pkg. of 1	<--->
ECX2300-10K	22 mm potentiometer with 10k Ω resistance, $\pm 10\%$. Nominal voltage: 250V. Rated dissipation: 2W at 25°C. Temperature range -40°C to 70°C. Black handle	pkg. of 1	<--->
ECX2640	22 mm legend plate for potentiometer with 0% to 100% marking	pkg. of 1	<--->



22 mm Pilot Device Accessories

Replacement incandescent bulbs



Part Number	Rating	Description	Quantity	Price
ECX1900-5	6V, 1.2 watts	6V replacement bulb for 22 mm metal and C-H switches and indicators. Miniature bayonet base T31/4	pkg. of 5 bulbs	<--->
ECX1902-5	24V@ 80mA 2 watts	24V replacement bulb for 22 mm metal and C-H switches and indicators. Miniature bayonet base T31/4	pkg. of 5 bulbs	<--->
ECX1904-5	130V@20mA 2.6 watts	120V replacement bulb for 22 mm metal and C-H switches and indicators. Miniature bayonet base T31/4	pkg. of 5 bulbs	<--->

Note: Bulb removal tool available. Order part number HT8LAMP TOOL.

Replacement LED bulbs



Part Number	Color	Rating	Description	Quantity	Price
ECX1911-2	Red	24V@26mA 0.6 watts	LED replacement lamp for miniature bayonet bases	pkg. of 2 LED lamps	<--->
ECX1912-2	Green				<--->
ECX1913-2	Yellow				<--->
ECX1914-2	Blue				<--->
ECX1915-2	White				<--->
ECX1921-2	Red	120V@5mA 0.6 watts	Works with 22 mm metal and Cutler-Hammer switches and indicators, but illumination will not be as even when used with 22mm indicators		<--->
ECX1922-2	Green				<--->
ECX1923-2	Yellow				<--->
ECX1924-2	Blue				<--->
ECX1925-2	White				<--->

Note: LED modules have very low current draw and should not be used with triac output devices like PLC triac output modules. It is recommended that dry contact outputs be used to switch 120 volt AC modules.

Hole plug



Part Number	Description	Color	Price
ECX1490	Plastic hole plug for 22.5mm openings in panels and enclosures; supplied with O-ring and mounting screw. Two plugs per package.	Black	<--->

† Note: All dimensions are in millimeters. 25.4mm = 1 inch.
For example, 30 mm in inches = 30/25.4 = 1.181 inches.

22 mm Pilot Device Accessories

Protective covers for pushbuttons



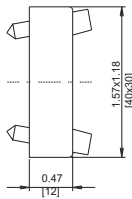
ECX1703-5

Part Number	Color	Description	Quantity	Price
ECX1700-5	Black	Silicone protective covers for use with 22 mm metal standard-size flush pushbuttons. Will not work with C-H pushbuttons, 22 mm metal illuminated or extended pushbuttons, or 22 mm metal pushbuttons with 40 mm actuator face.	pkg. of 5 protective caps	<--->
ECX1701-5	Red			<--->
ECX1702-5	Green			<--->
ECX1703-5	Yellow			<--->
ECX1704-5	Blue			<--->
ECX1705-5	Clear			<--->
ECX1706-5	Clear	Clear silicone protective covers for use with 22 mm metal illuminated and extended pushbuttons only . Will not work with C-H pushbuttons, 22 mm metal pushbuttons with 40 mm actuator face, or 22 mm metal lighted mushroom pushbuttons.		<--->

Replacement 22 mm support base



ECX1029-2

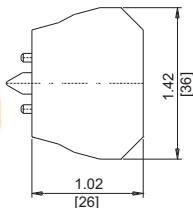


Part Number	Description	Quantity	Price
ECX1029-2	22 mm Support Base Note: This item is supplied as a replacement part and is not required with any switch assembly. Will not work with Cutler-Hammer 22 mm switches sold by AUTOMATIONDIRECT	pkg. of 1	<--->

Replacement contact blocks



ECX1030-2



Part Number	Contacts	Description	Quantity	Price
ECX1030-2	Red, normally-closed (N.C.)	Replacement contact block for 22 mm metal pushbuttons and selector switches.	pkg. of 2	<--->
ECX1030-5			pkg. of 5	<--->
ECX1040-2	Green, normally-open (N.O.)	Note: Will not work with Cutler-Hammer 22 mm switches sold by AUTOMATIONDIRECT	pkg. of 2	<--->
ECX1040-5			pkg. of 5	<--->
ECX1042-2	Brown, normally-open (N.O.), push-push	Use on lighted push-push button only	pkg. of 2	<--->

Note: See electrical specifications on page e25-25.

Replacement keys



Part Number	Description	Quantity	Price
ECX1067-2	Replacement keys for all key-actuated 22 mm metal selector switches only. Will not work with Cutler-Hammer 22 mm keyed switches sold by AutomationDirect	pkg. of 2	<--->

Note: All key-actuated 22mm metal selector switches are keyed alike.

EMERGENCY STOP legend plate



Part Number	Description	Quantity	Price
ECX1651	Oversize yellow circular EMERGENCY STOP legend plate for 22 mm E-stop type mushroom pushbuttons, 60mm outside diameter.	pkg. of 1	<--->

Note: All dimensions are in inches [millimeters].